

MF-PEARL

Fully Automatic Biochemistry Analyzer 200 tests/hour



Good choice of small biochemistry analyzer

- ◆ Independent mixer probe.
- ◆ Less utility of reagents : 20-300 µl/test.
- ◆ Efficiency speed: 200 tests/hour.
- ◆ User friendly: smart and easy operating software.
- ◆ High accuracy: minimal operating/random errors.

System functions

- ◆ Analysis method: end-point, kinetic, two-point.
- ◆ Double-reagent, double-wavelength, multi-standard, etc.
- ◆ Open to different brand reagents.

Sample/Reagents

- ◆ Sample volume: 1-30µl, 0.1µl step.
- ◆ Sample position: 40 pcs.
- ◆ Reagent position: 80 pcs (With refrigerated function).
- ◆ Reagent volume: 20-300 µl, 1µl step.

Vertical automatic biochemistry analyzer

- ◆ Compact design(W*D*H): 700*650*1200mm.

Reaction system

- ◆ Reaction cuvette: 44 reusable cuvettes.
- ◆ Optical length of cuvette: 6mm.
- ◆ Reaction volume: 150-350µl.
- ◆ Reaction time: 10 minutes.
- ◆ Reaction temperature: 37±0.1°C, automatic heating.

Optical system

- ◆ Light source: halogen-tungsten lamp.
- ◆ Wavelength: 340-700nm, 8 wavelengths.
- ◆ Absorbance range: 0-4.00Abs.
- ◆ Resolution: 0.0001Abs.

Calibration and Quality control individually

- ◆ Calibration: linear/nonlinear, one point, multi-point (Max 8 points).
- ◆ Quality control: QC plot automatically depict the function condition, show the QC results.

Working condition

- ◆ Power supply: AC110/220V±10%, 50/60Hz, 1000VA.
- ◆ Temperature: 10-40 °C.
- ◆ Humidity: ≤90%, no dew.

Operation computer system

- ◆ Windows 7, Windows 8 or above, windows XP.

Input and output

- ◆ Input: USB interface/computer.
- ◆ Output: Multi-format printout.

Technical Specifications



Sample/Reagent tray

- ◆ 40 sample positions.
- ◆ 80 reagent positions.
- ◆ Reagent refrigerated function.

Reaction tray

- ◆ Reaction tray.
- ◆ 44 reusable cuvettes.
- ◆ Automatic blank testing for cuvettes.
- ◆ Dismountable, easily replacement.
- ◆ Reaction temperature 37°C, constant temperature function.
- ◆ Colorimetry system of the pattern of light splitting behind cuvettes.



Sample/Reagent Probe

- ◆ Automatic liquid level detecting.
- ◆ Collision protection function.
- ◆ Probe internal/external washing.
- ◆ Probe depth automatic adjustment.

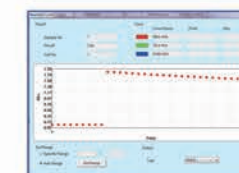
Auto cleaning system

- ◆ Automatically 4-step wash.
- ◆ 3 times repeat wash.
- ◆ Hi-tech washing station to ensure accurate results.



Auto mixer, independently

- ◆ Automatically mix reagent and sample in cuvettes.
- ◆ Ensure full reaction.
- ◆ Automated wash itself.
- ◆ Avoid cross-contamination.



Perfect standard diagram

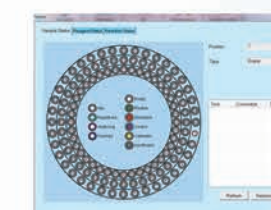
- ◆ Automatic show reaction curve.
- ◆ QC result diagram recorder, print available.

Intelligent software

- ◆ Automatic washing cuvette when start test&finish test.
- ◆ Automatic detect sample& reagent volume.
- ◆ Reaction temperature detecting when start up.
- ◆ Automatic alarm of no reagent, no sample, wrong run, out of linearity range etc.
- ◆ Automatic re-test sample in next order after no reagent.



Real-time and Dynamic display running status



- ◆ Real-time show the running status.
- ◆ Real-time show the status of reagent tray, sample tray, cuvettes.
- ◆ Rea-time update the reagent residual volume.